



# PassthePaper™

11+ and Independent Mock Papers

[www.passthepaper.co.uk](http://www.passthepaper.co.uk)

## Multiple Choice English & Grammar Sample Paper

10 Questions

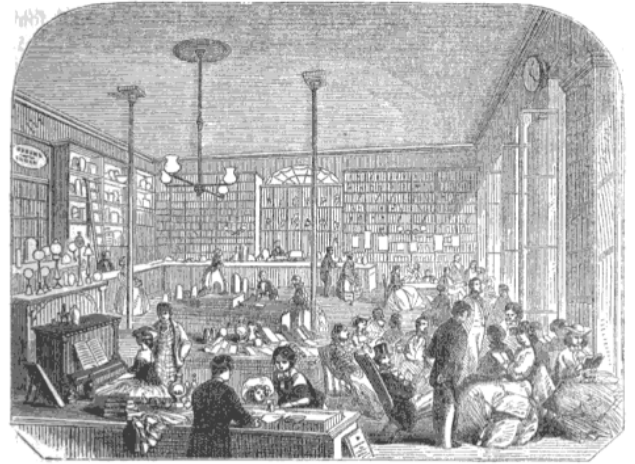
10 minutes

Please use the answer sheet provided and work as quickly and accurately as you can.

Read the text *twice* and answer the questions that follow

*Extract from: The Official Illustrated Guide to the South Eastern Railway*

The environs of Ramsgate are charmingly picturesque and diversified. Several handsome residences are here. East Cliff Lodge, pleasantly situated about a mile to the north-east of the town, is a large marine villa, belonging to Sir Moses Montefiore, Knight. The caverns at East Cliff deserve particular notice: they are formed by an excavation at the distance of thirty feet from the cliff, and parallel with it, descending gradually to the level of the shore.



INTERIOR OF FULLER'S MARINE LIBRARY.

Q.1            What is the author's opening opinion of Ramsgate?

- a. The people who live there are very good looking
- b. It was built by a man called Moses Montefiore
- c. There are some beautiful homes
- d. The sea air is very refreshing
- e. It is a very long way from London

Q.2            Where do the caverns lead?

- a. Into rooms of light
- b. Straight to the beach
- c. To the inside of a chalky cliff
- d. To some picturesque shrubs and flowers
- e. All the way to France

- End of section -

Q.3            Which of the below is the correct use of the word *imitate*

- a. It can really irritate someone if you imitate them
- b. The couple were in an imitate embrace
- c. The priest said an imitate prayer
- d. We should always imitate our hands before eating
- e. Willow trees grow near imitate amounts of water

Q.4 Select the sentence below with correct punctuation

- a. Literature's best friend is the, constant reader's devoted attention.
- b. Literatures best friend is the constant reader's devoted attention.
- c. Literature's best friend is the constant readers devoted attention.
- d. Literature's best friend is the constant reader's devoted attention.
- e. Literature's best friend is the constant readers' devoted attention.

- End of section -

Read the passage and select the missing words in the questions that follow

*Extract from: The Strange Case of Doctor Jekyll and Mr Hyde, by Robert Louise Stevenson*

As soon as he got home, Utterson [Q.5] down and wrote to Jekyll, complaining of his exclusion from the house, and asking the cause of this unhappy break with Lanyon; and the next day brought him a long answer, often very pathetically worded, and sometimes darkly mysterious in drift. The quarrel with Lanyon was incurable. "I do not blame our [Q.6] friend," Jekyll wrote,



Q.5

- a. Fell
- b. Looked
- c. Dropped
- d. Sat
- e. Knelt

Q.6

- a. Old
- b. First
- c. Wrong
- d. Laughing
- e. School

- End of section -

Select the correct word type for the underlined word in each question

Q.7            but the old hands sleeping tranquilly until just before the dawn

- a. Proper noun
- b. Verb
- c. Noun
- d. Conjunction
- e. Adverb

- End of section -

Select the sentence without spelling mistakes in the below questions

Q.8

- a. Phoebe whinged and whined because she simply hadn't been trained properly
- b. Phoebe whinged and whinged because she simply hadn't been trained properly
- c. Phoebe whinjed and whined because she simply hadn't been trained properly
- d. Phoebe whinged and whined because she simply hadn't bean trained properly
- e. Phoebe whinged and whined because she simply hadn't been trained proparty

Select the word below that gives the correct meaning of the part in bold

Q.9            **Partial**

- a. Slight
- b. Part
- c. Into
- d. Piece
- e. Like

- End of section -

Q.10            Select the sentence below that uses a **simile**

- a. It takes two to tango
- b. You're a total dingbat
- c. That train shoots like a bullet
- d. Mary found the bedroom warm and cosy
- e. The floorboards moaned under his weight

Now go back and check your answers

# Answer Sheet

Please place an x in the bracket of the right answer.

E.g.

Q.0	a. [ ]	b. [ ]	c. [x]	d. [ ]	e. [ ]
-----	--------	--------	--------	--------	--------

Q.1	a. [ ]	b. [ ]	c. [ ]	d. [ ]	e. [ ]
Q.2	a. [ ]	b. [ ]	c. [ ]	d. [ ]	e. [ ]
Q.3	a. [ ]	b. [ ]	c. [ ]	d. [ ]	e. [ ]
Q.4	a. [ ]	b. [ ]	c. [ ]	d. [ ]	e. [ ]
Q.5	a. [ ]	b. [ ]	c. [ ]	d. [ ]	e. [ ]
Q.6	a. [ ]	b. [ ]	c. [ ]	d. [ ]	e. [ ]
Q.7	a. [ ]	b. [ ]	c. [ ]	d. [ ]	e. [ ]
Q.8	a. [ ]	b. [ ]	c. [ ]	d. [ ]	e. [ ]
Q.9	a. [ ]	b. [ ]	c. [ ]	d. [ ]	e. [ ]
Q.10	a. [ ]	b. [ ]	c. [ ]	d. [ ]	e. [ ]

# Answers

Q.1	C
Q.2	B
Q.3	A
Q.4	D
Q.5	D
Q.6	A
Q.7	D
Q.8	A
Q.9	E
Q.10	C